

# Mud Slough Wetland Mitigation Bank

## Phase 2 2013 Annual Report

July 2013

## **1.0 REGULATORY APPROVAL AND HISTORY**

Mud Slough Wetland Mitigation Bank (Bank) is submitting the 2013 Annual Report for Phase 2. Phase 2 of the Bank was approved in 2004. All 45.7 credits for Phase 2 have been released and all credits were sold out in 2009.

## **2.0 GRADING AND HYDROLOGY HISTORY**

Phase 2 grading work was completed in September 2004. It continues to meet all the specifications defined in the Mud Slough Wetland Mitigation Final Instrument. No additional grading work has been conducted.

The hydrology of the bank continues to function as expected and is providing optimum conditions for the plant communities that have been restored. No further monitoring of the hydrology is being conducted. All structures continue to function as designed.

## **3.0 VEGETATION HISTORY**

Phase 2 was planted in October 2004 and February 2005. The site progressed well and in 2007 the tufted hair grass was heavy and produced so much bio mass that it smothered itself out with the help of a January 2008 snow. As the spring of 2008 progressed, survival of the old plants was minimal. Seedling tufted hair grass and other grass species began to sprout as the old thatch began to break down. The tufted hairgrass rebounded the following year. We experienced another die back the tufted hairgrass during the winter of 2011-2012. Few non-native annual species have shown up as a result, of this die back however. Based on experience, we expect that this cycle will be repeated

Various options were debated with the IRT and implemented. A portion was swathed and baled to remove the seed heads. A second area was mowed and a third area no action was taken. No option seems superior at this time.

## **4.0 MONITORING AND MAINTENANCE**

Phase 2 was first monitored in 2006 and continued in 2007, meeting all performance standards. No monitoring was conducted in 2008 due to the site passing performance standards two years in a row. In 2009, monitoring on the herbaceous layer was reinstated by the sponsor. This was done to evaluate the various human manipulations and natural recovery from the 2008 die-off. The 2010 vegetation monitoring showed that the evolution of the site was going toward even more native fac or wetter species. The site has met all of its performance standards. No monitoring was conducted in 2011, 2012 or 2013.

Photos were taken at each of the photo points and are included in Attachment 1. The photo point locations are included on Attachment 2.

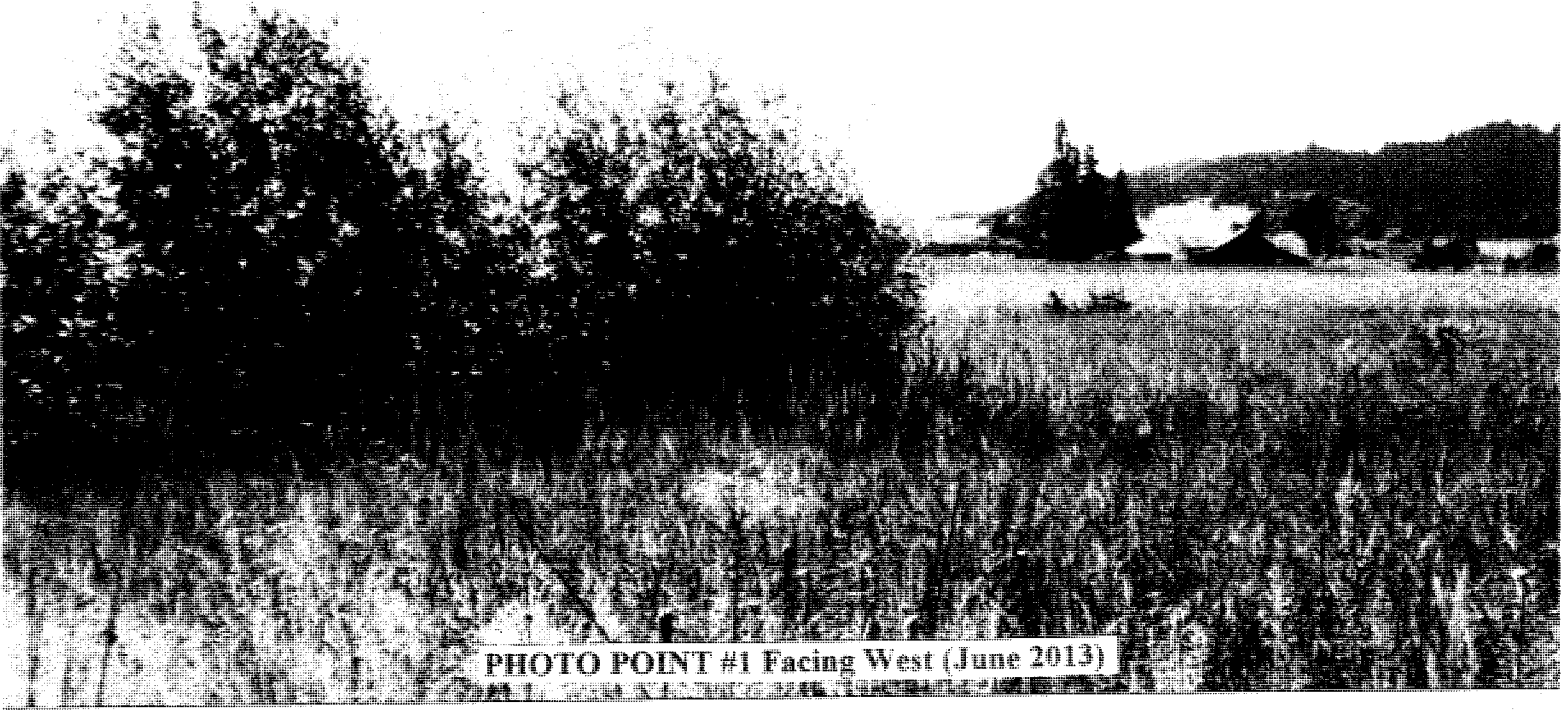
The only maintenance that has been done on Phase 2 is spot spraying. In the past year, this has primarily focused on reed canarygrass (*Phalaris arundinacea*), Canadian thistle (*Cirsium arvense*), pennyroyal (*Mentha pulegium*) and Himalayan blackberry (*Rubus discolor*).

## **5.0 CONSERVATION EASEMENT- ENDOWMENT**

Phase 2 was added to a conservation easement with the Wetlands Conservancy in 2010 and is funded by a voluntary endowment funded in January 2007 with \$92,778. This is available for management of Phases 1 and 2. Original plans included Phase 2 being maintained by the sponsor until November 2014. However, the addition of a conservation easement with a funded endowment was not required in our banking instrument. Since long term management of the site is now in place, we are requesting that the bank be closed at this time, allowing for activation of the conservation easement. This would allow us to begin some enhancement measures, like expanding the forb community that is not required under our banking instrument.

**6.0 BANK CLOSURE**

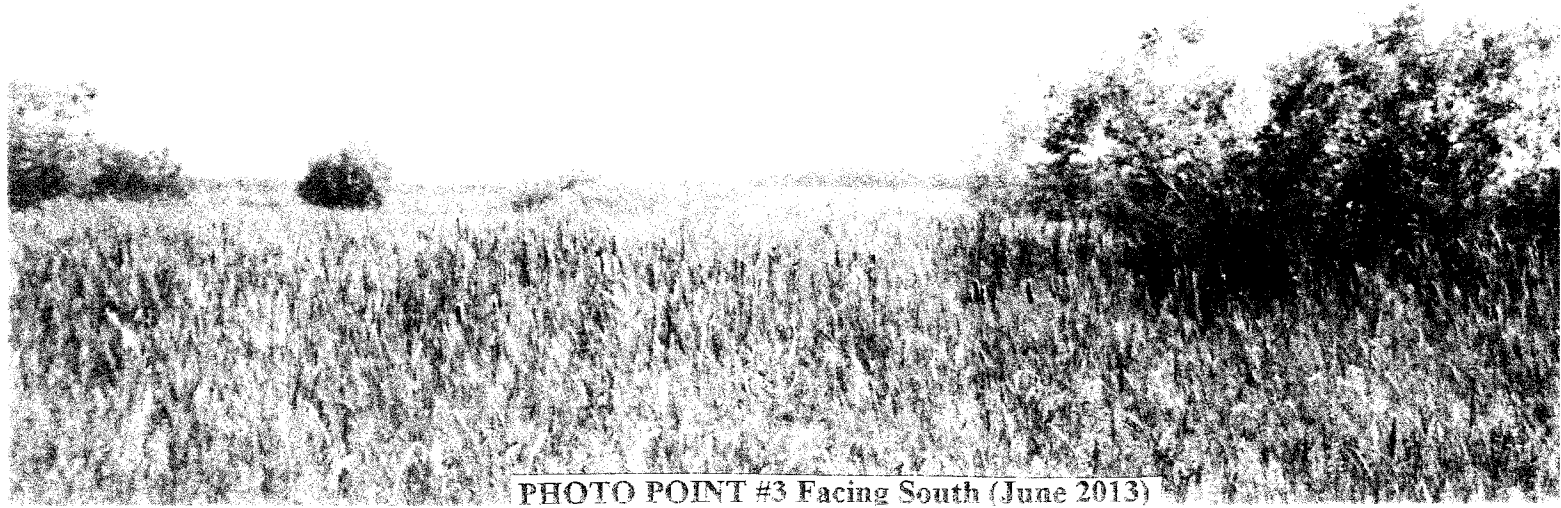
In order to accomplish the above, upon acceptance of this report, we are requesting that Phase 2 of the Mud Slough Wetland Mitigation Bank be closed and the management be transferred to the long term steward, The Wetlands Conservancy.



**PHOTO POINT #1 Facing West (June 2013)**



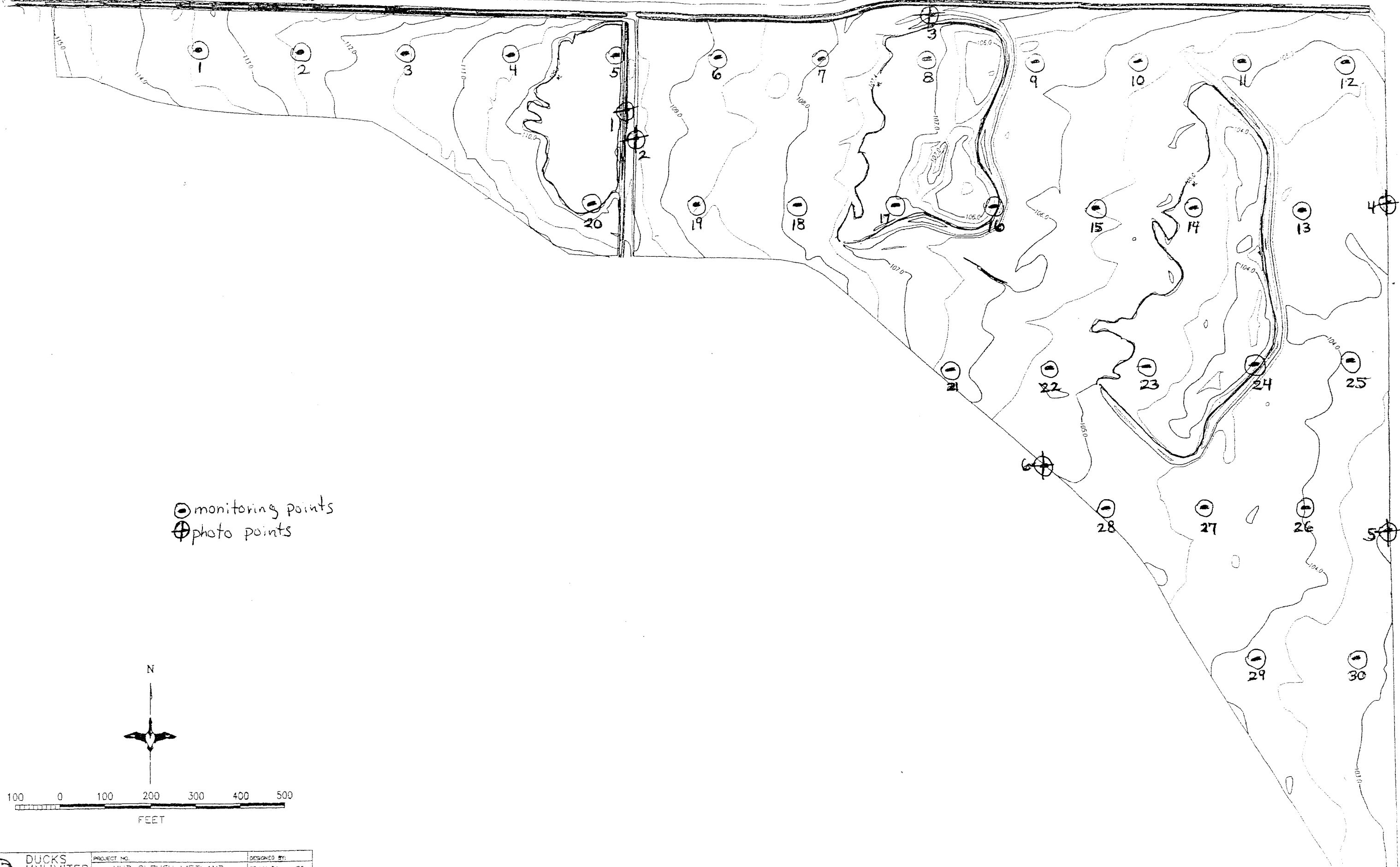
**PHOTO POINT #2 Facing East (June 2013)**



**PHOTO POINT #3 Facing South (June 2013)**

FARMER ROAD

FARMER ROAD



⊙ monitoring points  
 ⊕ photo points



 DUCKS UNLIMITED INC.	PROJECT NO.	DESIGNED BY:
	MUD SLOUGH WETLAND MITIGATION BANK AS-BUILT	DRAWN BY: J.P.S.
		SURVEYED BY: J.P.S.
		CHECKED BY:
DATE:	SHEET NO.:	APPROVED BY:

HORIZONTAL COORDINATES: OREGON STATE PLANE NORTH ZONE NAD83  
 VERTICAL COORDINATES: ASSUMED ELEVATION  
 (ASSUMED ELEVATION OF MONUMENT SE CORNER SEC 17=100.0, NAVD88 ELEVATION =174.7)